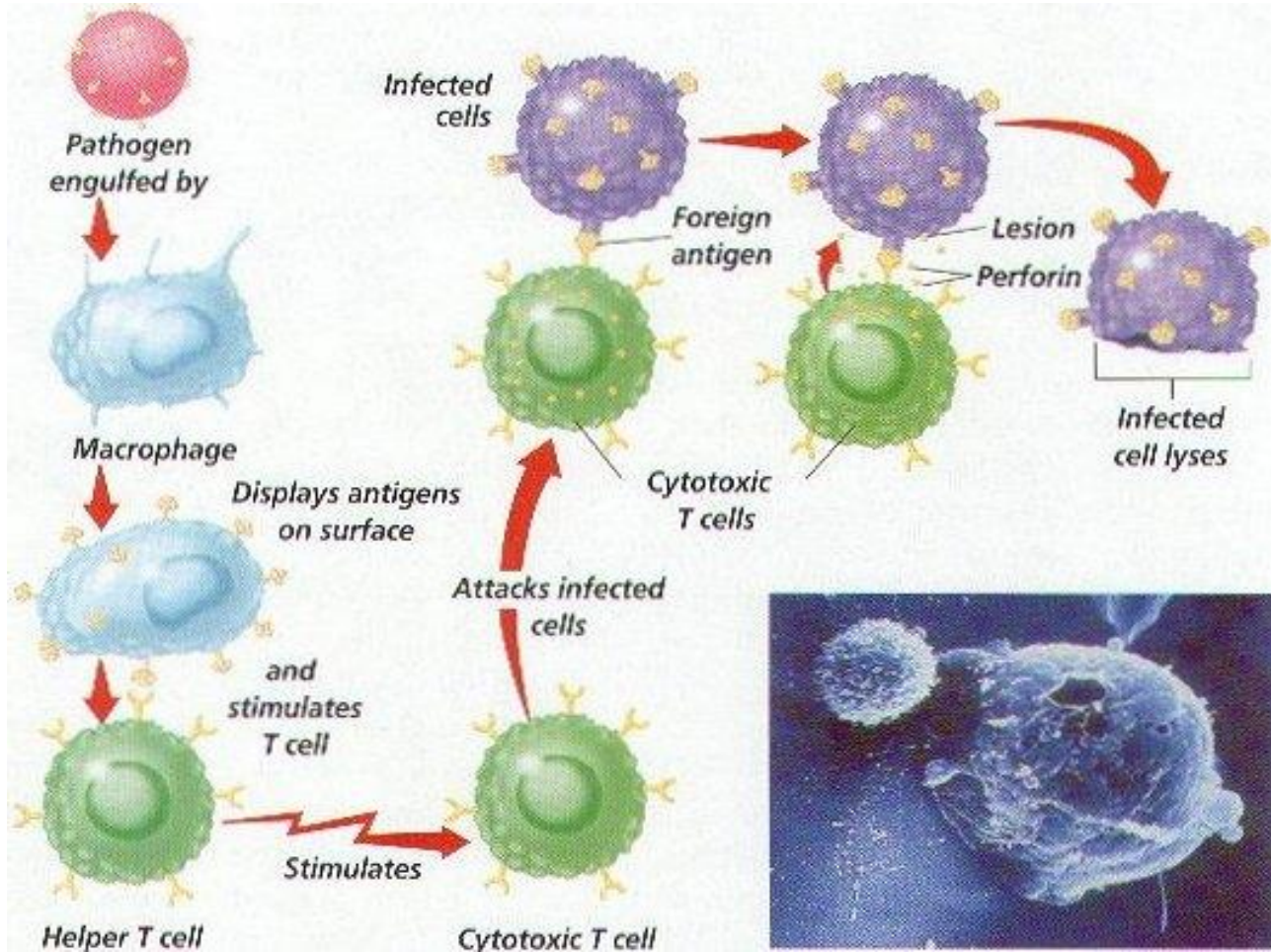


Name _____ Date _____ Class _____

Antibody and Cellular Immunity Worksheet

Directions: *Examine the diagrams on the back of this sheet and then Read pages 1015-1019. Answer the questions below*

1. What are antigens?
2. How does antibody immunity protect the body?
3. Compare T cells and B cells.
4. Which type of immune response involves direct contact T cells and antigens?
5. What are memory B cells and memory T cells?
6. How do helper T cells contribute to the body's defense against pathogens?
7. How do cytotoxic T cells respond to infected cells?



Or

